



OLF Barin Confirmed and Potential PFAS Release Areas

TO REQUEST SAMPLING

call
844-NASWFLD
(844-627-9353)

visit
<http://go.usa.gov/xAEQF>

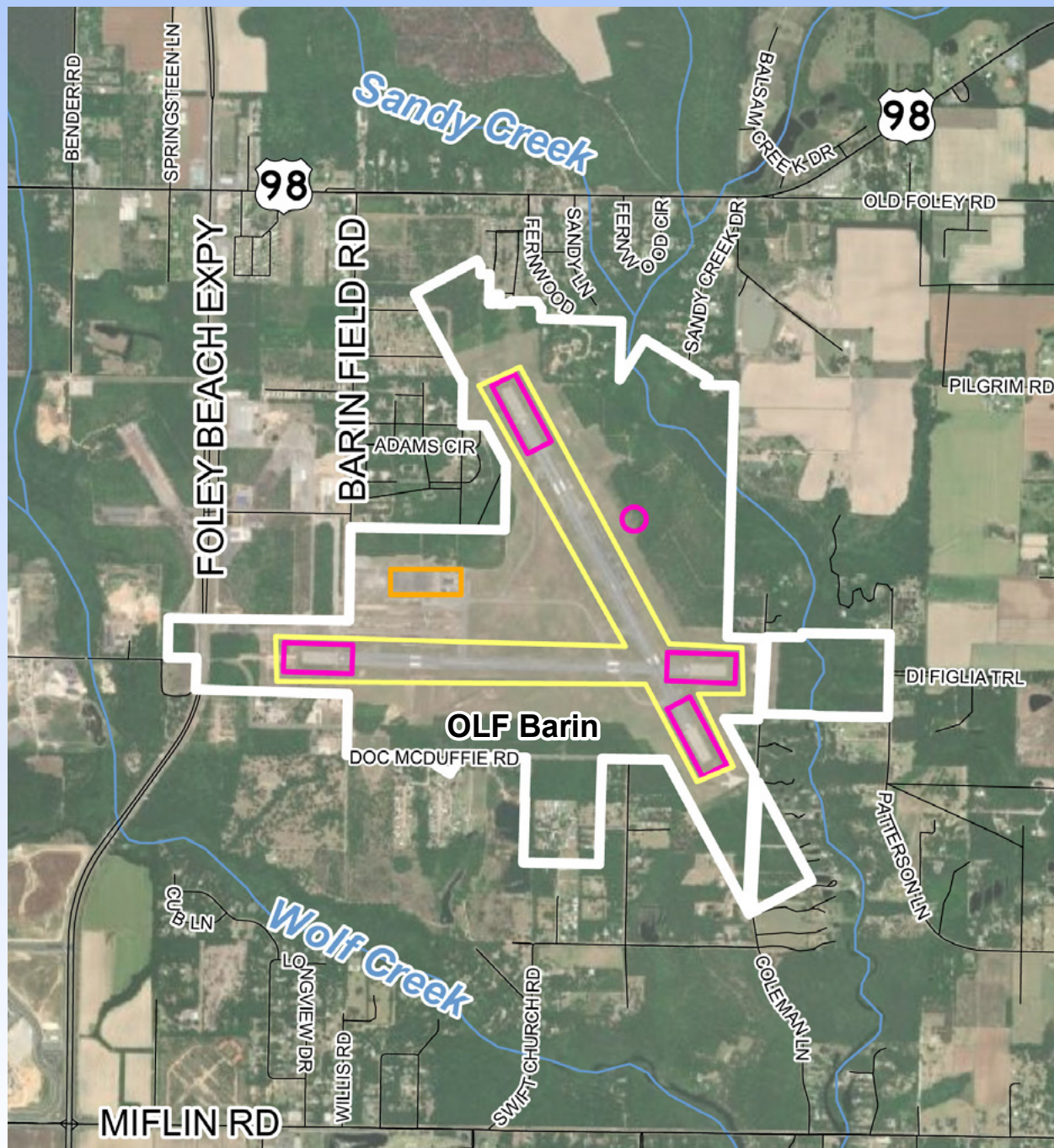
or scan the
QR code ↓



ACRONYMS & ABBREVIATIONS

OLF Outlying Landing Field

PFAS per- and polyfluoroalkyl substances



- Further investigation is underway because of previous uses of firefighting foam at OLF Barin.
- The Navy is following the well-established federal statutory/regulatory environmental cleanup process for assessment of and response to PFAS releases.
- Six on-base areas have been identified as confirmed or potential PFAS release areas.
- Findings are documented in a Preliminary Assessment Report, which will be completed in 2021 and available in the Administrative Record: <http://go.usa.gov/xAEQF>.

LEGEND

- Confirmed PFAS release area
- Potential PFAS release area
- Runways
- OLF boundary
- Surface water





Off-Base PFAS Drinking Water Investigation

TO REQUEST SAMPLING

call
844-NASWFLD
(844-627-9353)

visit
<http://go.usa.gov/xAEQF>

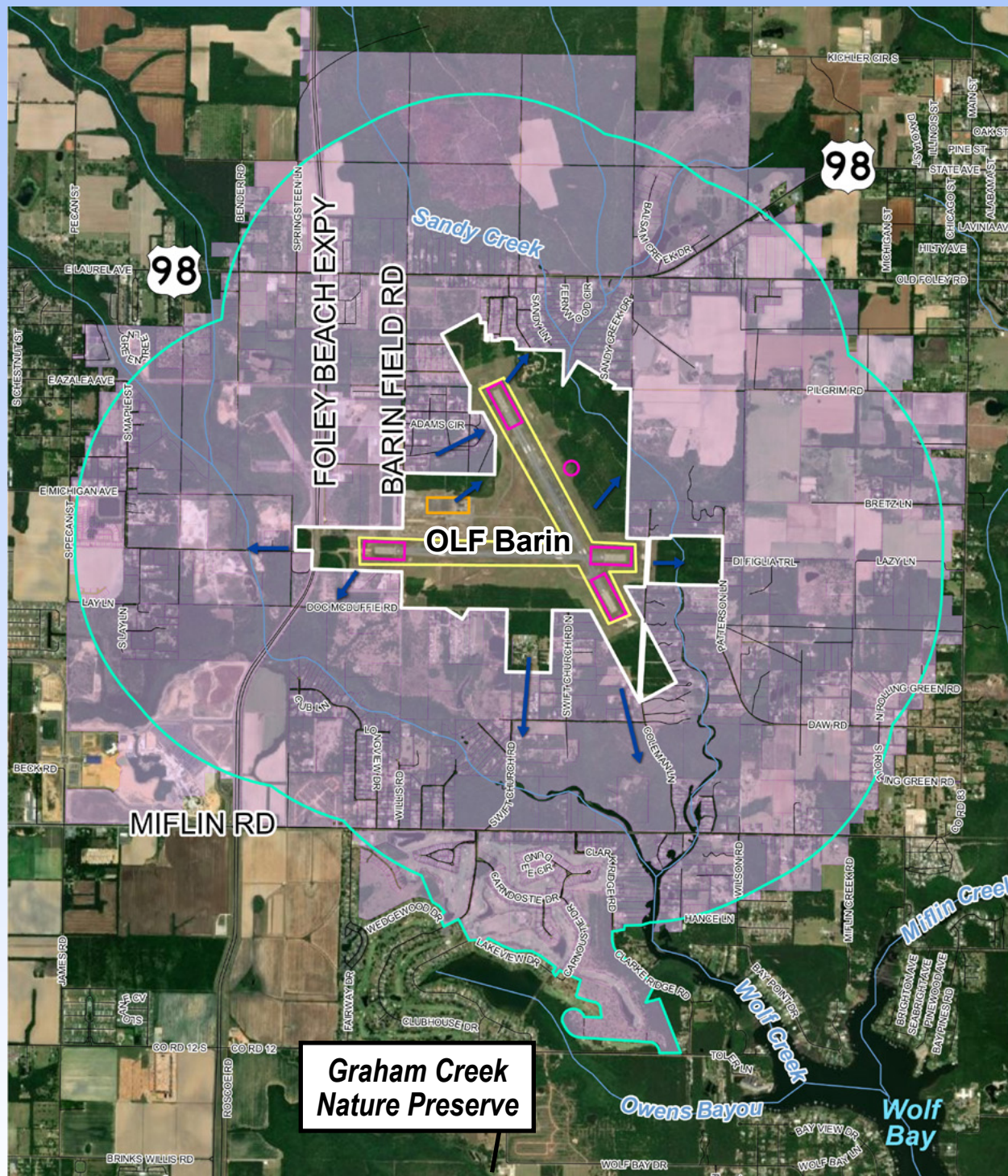
or scan the
QR code ↓



ACRONYMS & ABBREVIATIONS

OLF Outlying Landing Field

PFAS per- and polyfluoroalkyl substances



The Navy needs your help to sample your drinking water well.

- The sampling area includes properties within 1 mile in the direction of groundwater flow from the OLF boundary.
- Although the runways were not identified as potential release areas, they were used to determine the sampling area to be conservative.
- If your drinking water is provided by Riviera Utilities, the Navy does not need to sample your water.
- The Navy may expand the sampling area based on the results of the current sampling of drinking water wells.

LEGEND

- Confirmed PFAS release area
- Potential PFAS release area
- Runways
- OLF boundary
- Surface water
- Estimated groundwater flow direction
- Designated sampling area boundary
- Designated sampling area

