



# OLF Evergreen Potential PFAS Release Areas

## TO REQUEST SAMPLING

call  
844-NASWFLD  
(844-627-9353)

visit  
<http://go.usa.gov/xAEQF>

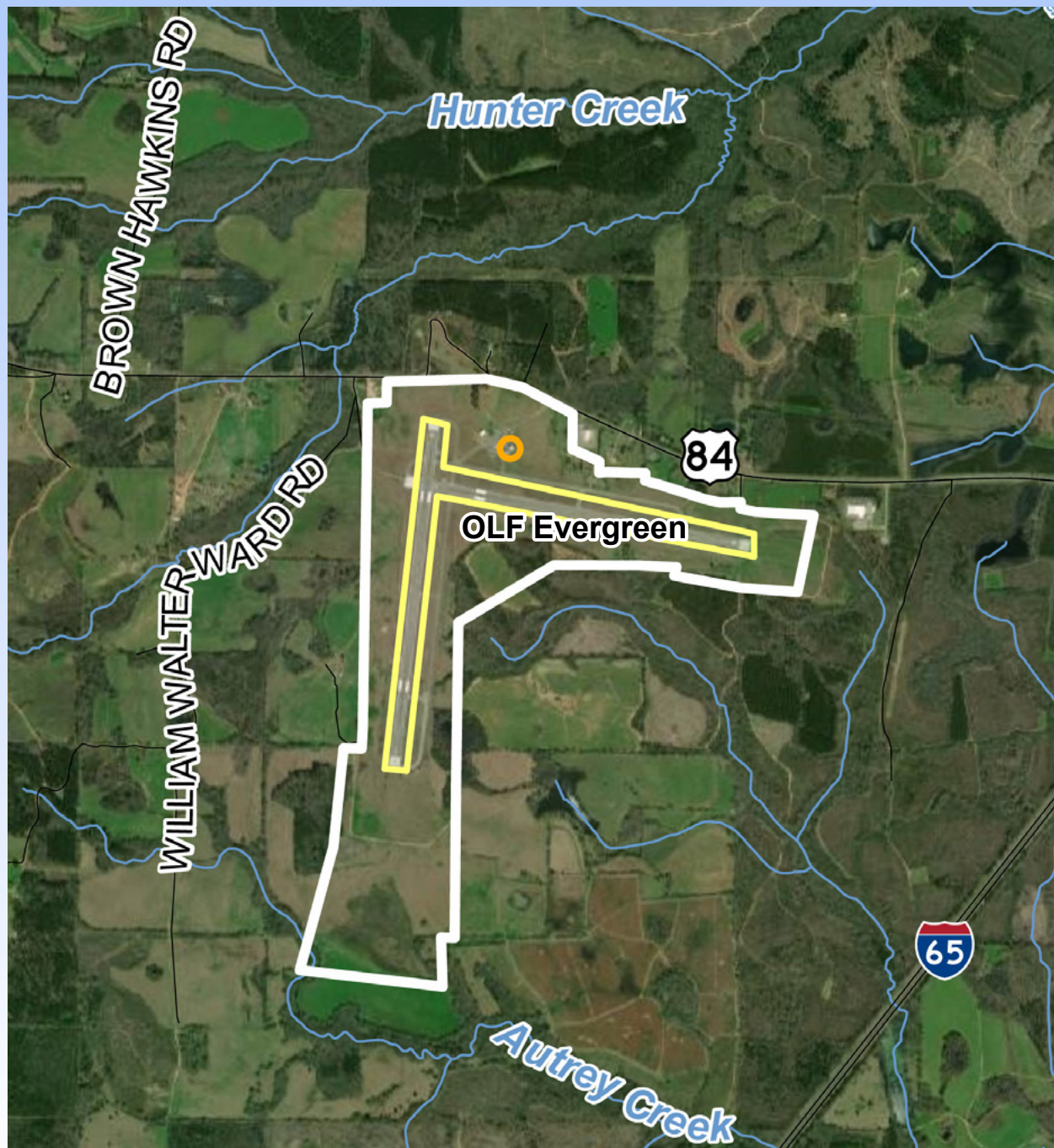
or scan the  
QR code ↓



## ACRONYMS & ABBREVIATIONS

OLF Outlying Landing Field

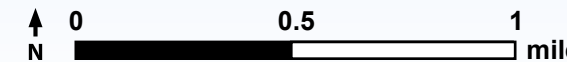
PFAS per- and polyfluoroalkyl substances



- Further investigation is underway because of potential uses of firefighting foam at OLF Evergreen.
- The Navy is following the well-established federal statutory/regulatory environmental cleanup process for assessment of and response to PFAS releases.
- One on-base area has been identified as a potential PFAS release area.
- Findings are documented in a Preliminary Assessment Report, which will be completed in 2021 and available in the Administrative Record: <http://go.usa.gov/xAEQF>.

## LEGEND

- Potential PFAS release area
- Runways
- OLF boundary
- Surface water







# Off-Base PFAS Drinking Water Investigation

## TO REQUEST SAMPLING

call  
844-NASWFLD  
(844-627-9353)

visit  
<http://go.usa.gov/xAEQF>

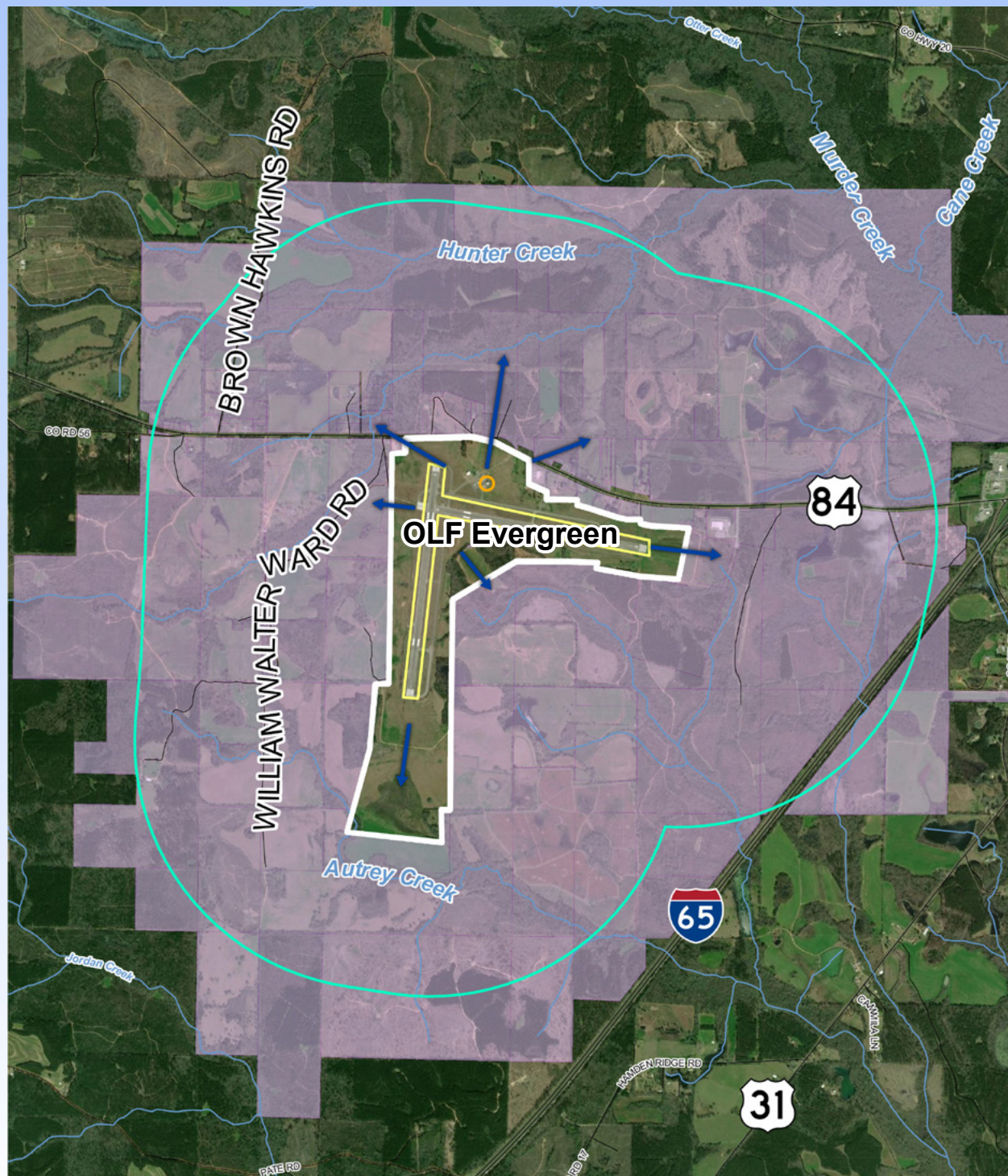
or scan the  
QR code ↓



## ACRONYMS & ABBREVIATIONS

OLF Outlying Landing Field

PFAS per- and polyfluoroalkyl substances



## The Navy needs your help to sample your drinking water well.

- The sampling area includes properties within 1 mile in the direction of groundwater flow from the OLF boundary.
- Although the runways were not identified as potential release areas, they were used to determine the sampling area to be conservative.
- If your drinking water is provided by Fairview Water Systems, the Navy does not need to sample your water.
- The Navy may expand the sampling area based on the results of the current sampling of drinking water wells.

## LEGEND

- Potential PFAS release area
- Runways
- OLF boundary
- Surface water
- ➔ Estimated groundwater flow direction
- Designated sampling area boundary
- Designated sampling area

